

**Technical Data Sheet**

**Label** is a topcoated thermal transfer printable white polyimide film coated with a permanent pressure sensitive acrylic adhesive and backed with glassine paper liner.

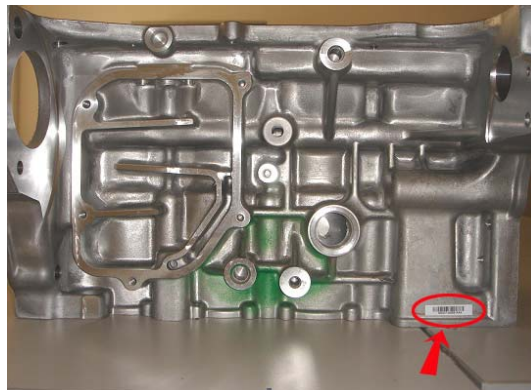
**Construction**

<b>Facestock</b>	50 micron Polyimide film
<b>Adhesive</b>	50 micron acrylic adhesive
<b>Liner</b>	glassine paper

**Application**

Parts Tracking Label

- Automotive
- Steel



**Adhesion**

Surface	180° peel (N/in)
Stainless steel	12

**Thermal Transfer Ribbon** T121 、 R300

**Service Temperature Range:** -40° C — 300° C

**Storage Stability** One years stored at 70°F (21°C) and 50% RH